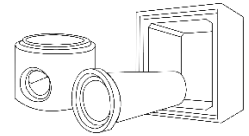




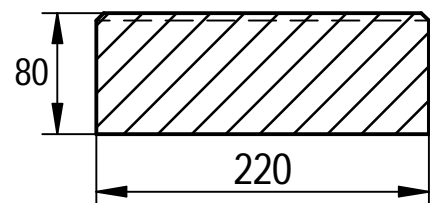
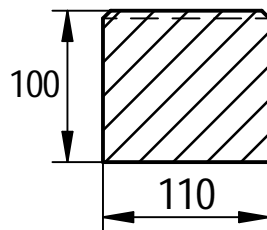
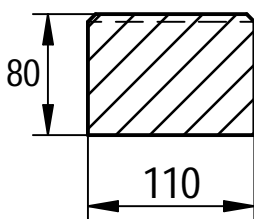
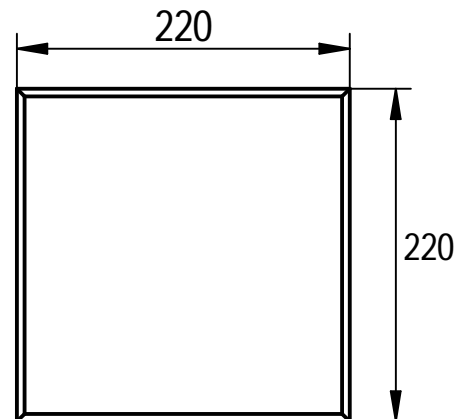
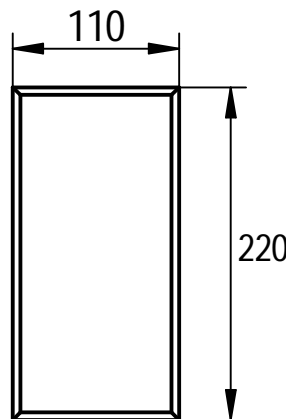
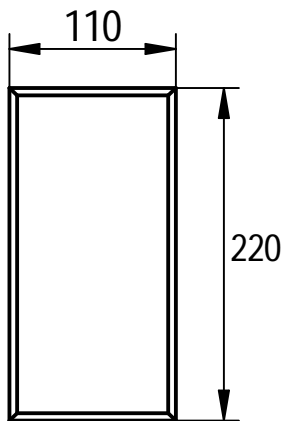
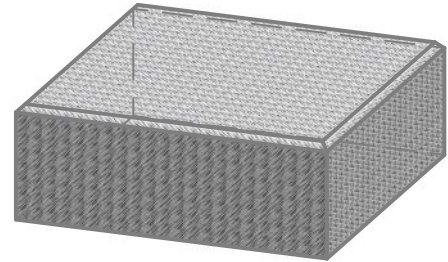
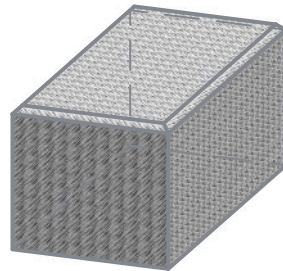
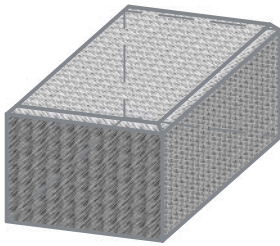
# BETON DE CLERCO

PREFABBETON & WATERBEHANDELINGSSYSTEMEN

BETON DE CLERCO NV - Wiedauwkaai 66- 9000 Gent - TEL. +32(0)9 2538296 - info@declercq-beton.be



## WATERDOORLATENDE / POREUZE STRAATSTEEN PAVES PERMEABLE / POREUX



Kleuren grijs en zwart  
Couleurs gris et noir

TECHNISCHE FICHE / FICHE TECHNIQUE		
Doortalendheidsfactor individueel / Permeabilité individuelle k>2.7x10 <sup>-5</sup> m/s	Gewicht / Poids 3,9-5,0-7,8kg	Aantal / Nombre
Doortalendheidsfactor gemiddeld / Permeabilité moyenne k>5.4x10 <sup>-5</sup> m/s	Tekenaar Jo Verbeken	
Sterkteklasse / Classe de résistance BC6	Productie / Production Gent	Formaat A4